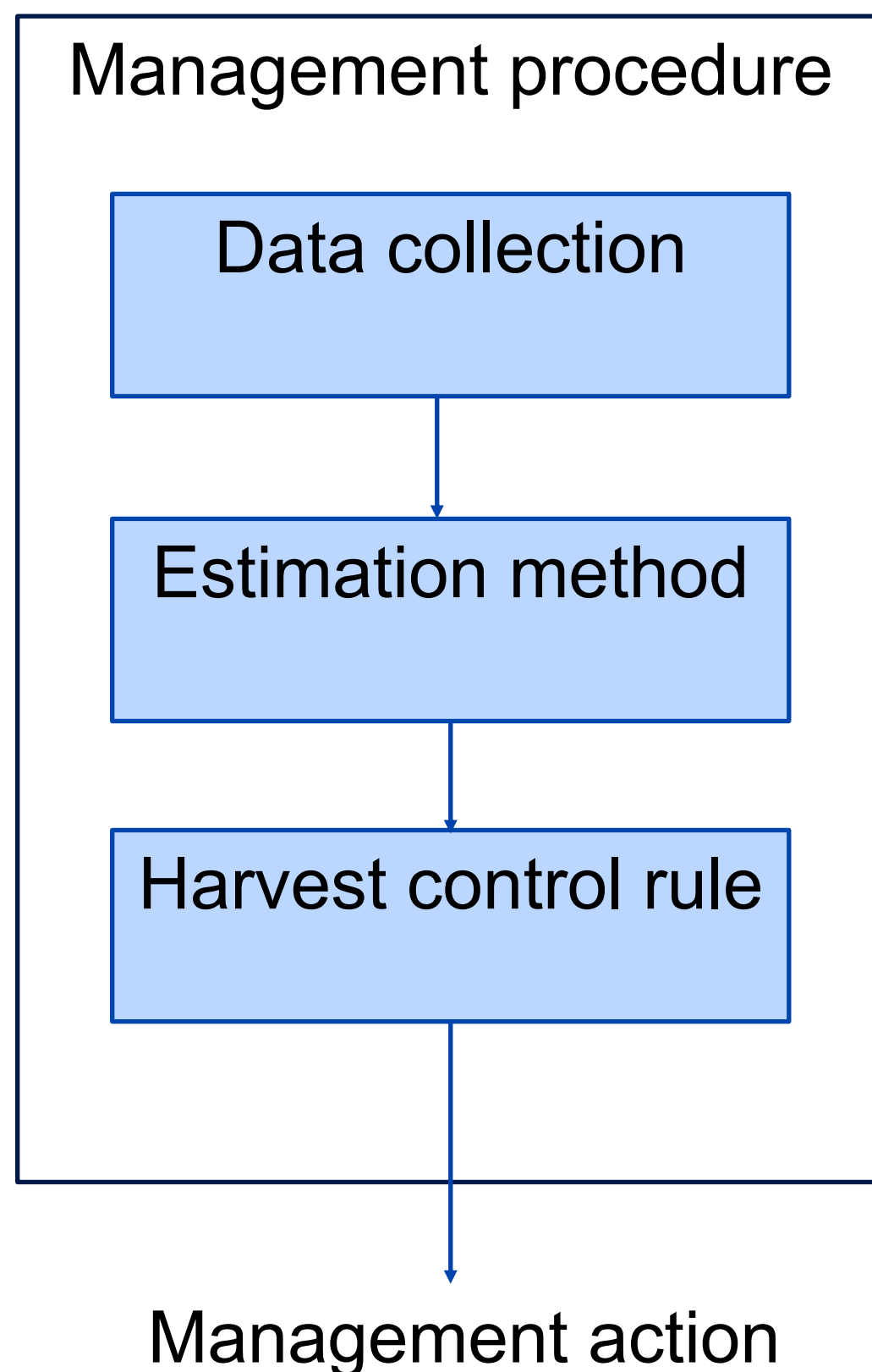


# **WCPFC adopted management procedure for SPA**

SPAJWG01

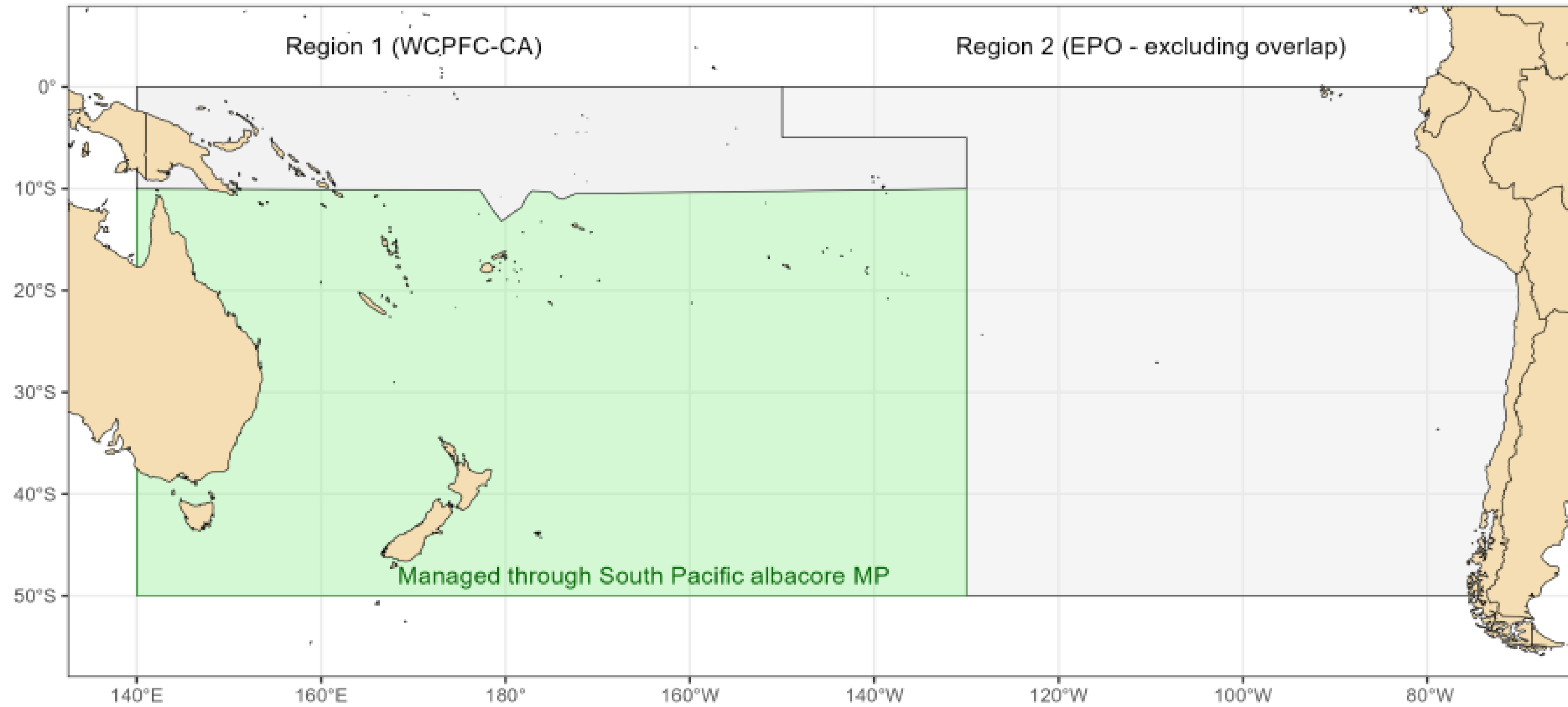
18-19 March 2026

# What is a harvest strategy?



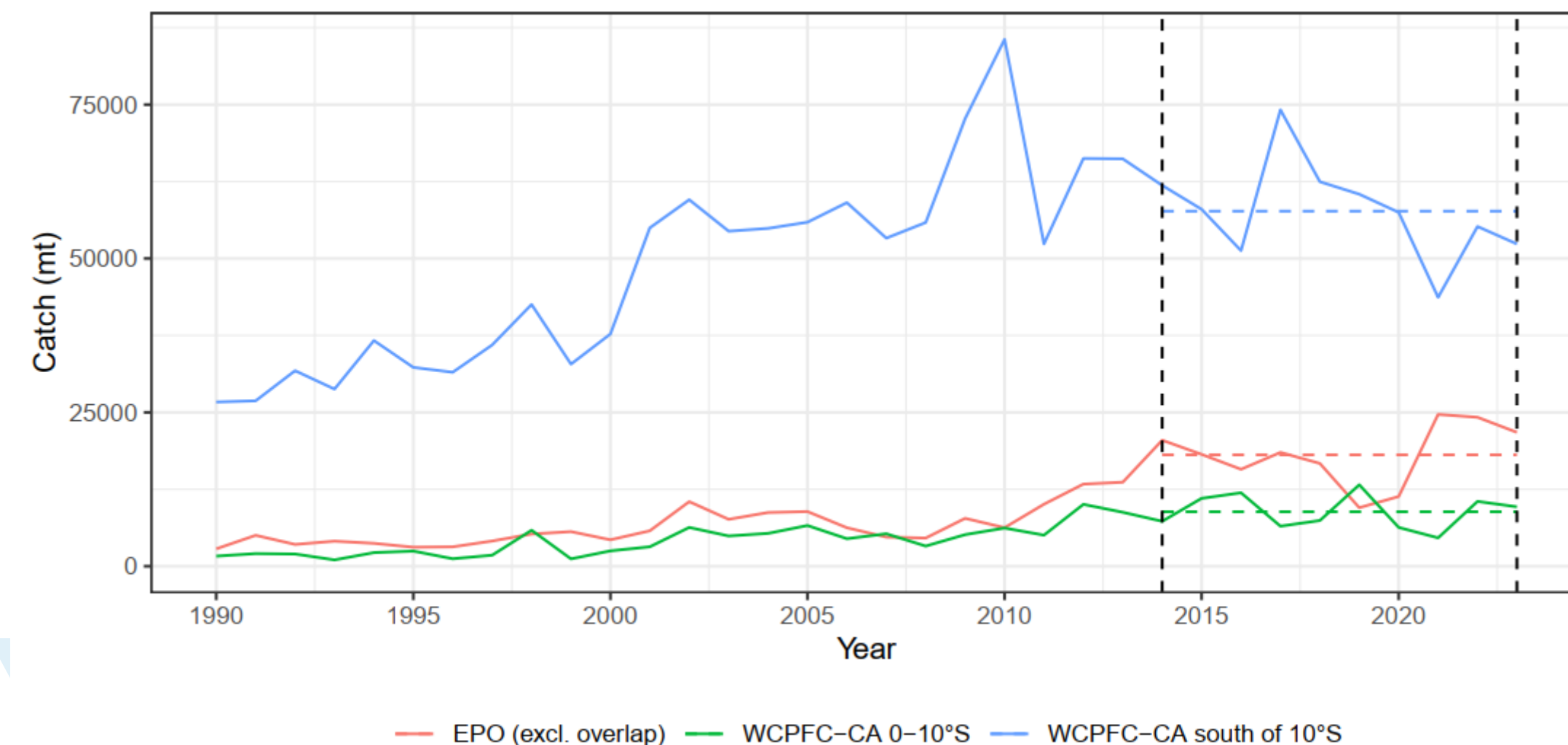
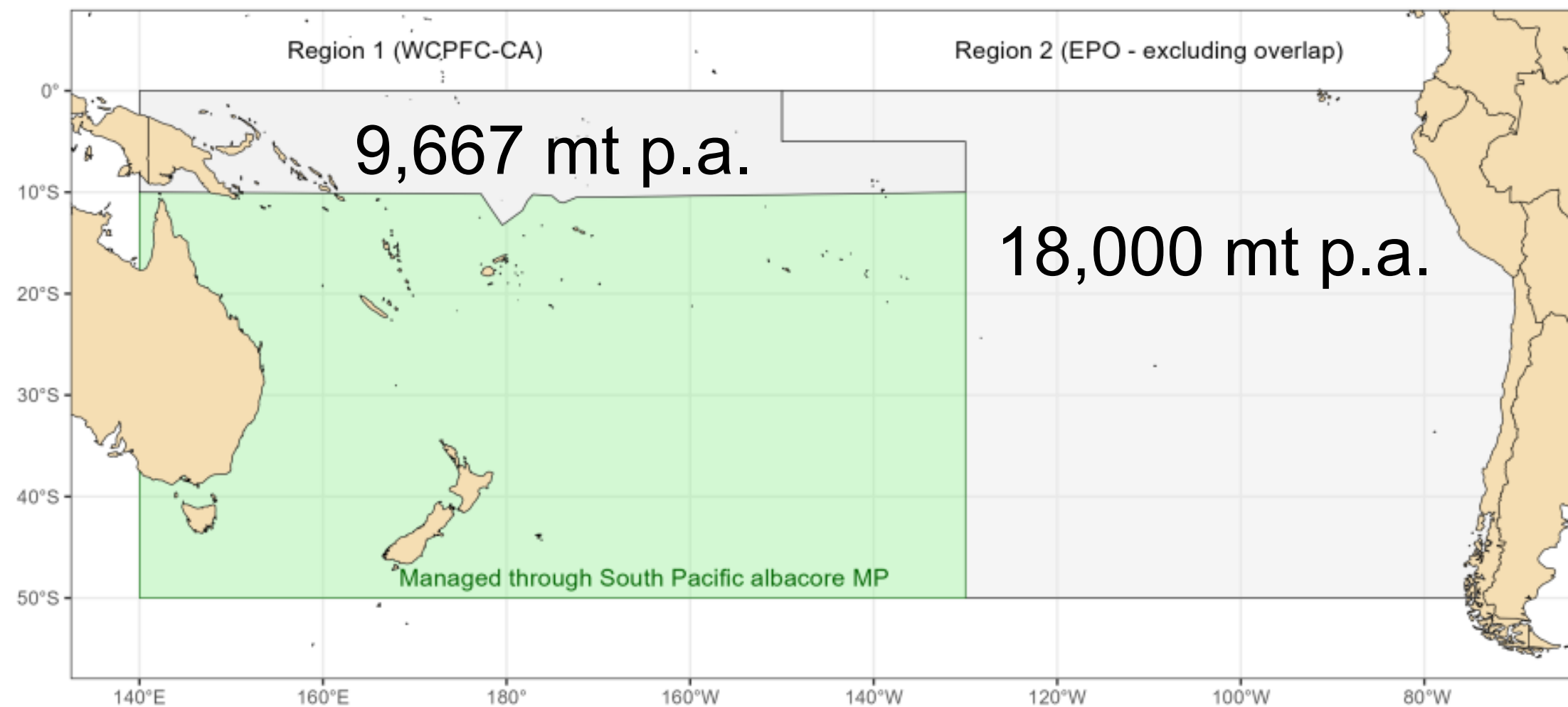
- Management framework designed to achieve specific objectives, such as stock sustainability and economic benefits, by pre-agreeing management actions and supported by scientific analysis.
- By pre-agreeing management action, management becomes less reactive and more focussed on achieving longer-term objectives.
- Offers stability and predictability for industry and stakeholders.
- At the heart of the harvest strategy is a Management Procedure (MP).
- Alternative MPs tested using a simulation framework, and expected performance measured, e.g. future catch rates and stock status.
- Stakeholders selected preferred MP that would best achieve their objectives.

# Overview of the SPA management procedure



- Sets catch limit for longline and troll fisheries operating in the region south of 10°S in the WCPFC-CA.
- Catch limit set by MP based on estimated stock status in WCPFC-CA (incl. overlap) - **CMM 2025-01**.
- Management period three years.
- Overall objective is to improve catch rates of SPA.
- Specific objective is to achieve WCPFC interim Target Reference Point on average.
- Does not handle allocation or implementation – being agreed this year.

# Assumptions made in the MP evaluation



- Models used in the MP evaluations based on 2024 stock assessment, include EPO.
- Necessary to make assumption about future catches levels in 0-10°S WCPFC-CA and in the EPO (excl. overlap).
- Based on 2014-2023 average level of catches.
- Requirement to monitor these catch levels in the future as part of the monitoring strategy.
- If future catches in EPO are sufficiently different from assumptions may be a need to revisit the MP.

# Future harvest strategy data requirements

- EPO catch as part of monitoring strategy to check assumptions made (18,000 mt p.a.).
  - Frequency to be determined (WCPFC to consider SPA monitoring strategy this year).
- EPO catch and effort data required to run estimation method in the MP.
  - Every three years.
  - Two year data lag.
  - First year is 2026.
- To monitor ongoing performance of MP, the result of the stock assessment in WCPFC-CA (inc. overlap) is compared to the WCPFC-CA iTRP.

# Acknowledgements

We gratefully acknowledge funding for this work from the New Zealand Ministry of Foreign Affairs and Trade (MFAT) funded project "Sustainable Pacific Fisheries".